

UNIQUE SOLUTIONS MADE BY THE SPECIALIST



Joh. Heinr. Bornemann GmbH

Industriestraße 2
31683 Obernkirchen
Germany

Fon: +49 5724 390-0
Fax: +49 5724 390-290
info@bornemann.com
www.bornemann.com



Germany – Headquarter

CANADA

Bornemann Inc.

320 441, 5th Avenue S.W.
Calgary, Alberta
Canada T2P 2V1
CANADA

Fon: +1 403 294 0777
Fax: +1 403 262 4073
info.ca@bornemann.com
www.bornemann-ca.com

USA

Bornemann Pumps, Inc.

10375 Richmond Ave,
Suite 1575
Houston, Texas 77042
USA

Fon: +1 832 320 25 00
info.usa@bornemann.com
www.bornemann-usa.com

Parts and new pump stocking

Bornemann Inc.

P.O. Box 1769
Matthews, NC 28106
USA

Fon: +1 704 849 86 36
Fax: +1 704 849 86 37
info.usa@bornemann.com
www.bornemann-usa.com

ARGENTINA

Bombas Bornemann S.R.L.

Armenia 2898
B1605CDP Munro
Prov. Buenos Aires
ARGENTINA

Fon: +54 11 475 680 08
Fax: +54 11 475 655 41
info.ar@bornemann.com
www.bornemann-ar.com

MEXICO

Bornemann S.A. de C.V.

Castillo de Cantburry 16
52938 Atizapan, Estado de Mexico
MEXICO

Fon: +52 55 5808 0875
Fax: +52 55 5808 1108
info.mx@bornemann.com
www.bornemann-mx.com

SINGAPORE

Bornemann Pumps Asia Pte. Ltd.

25 Intern. Business Park
German Centre, # 04-11/12
Singapore 609916
SINGAPORE

Fon: +65 656 167 82/3
Fon: +65 656 159 78
Fax: +65 656 167 84
info.sg@bornemann.com
www.bornemann-sg.com

CHINA

**Bornemann Pumps & Systems
(Tianjin) Co., Ltd.**

Jinbin General Building No. 6,
No. 45 Muning Road
TEDA, Tianjin
P. R. China 300457
CHINA

Fon: +86 22 662 978 00
Fax: +86 22 253 267 99
info.service@bornemann-cn.com
www.bornemann-cn.com

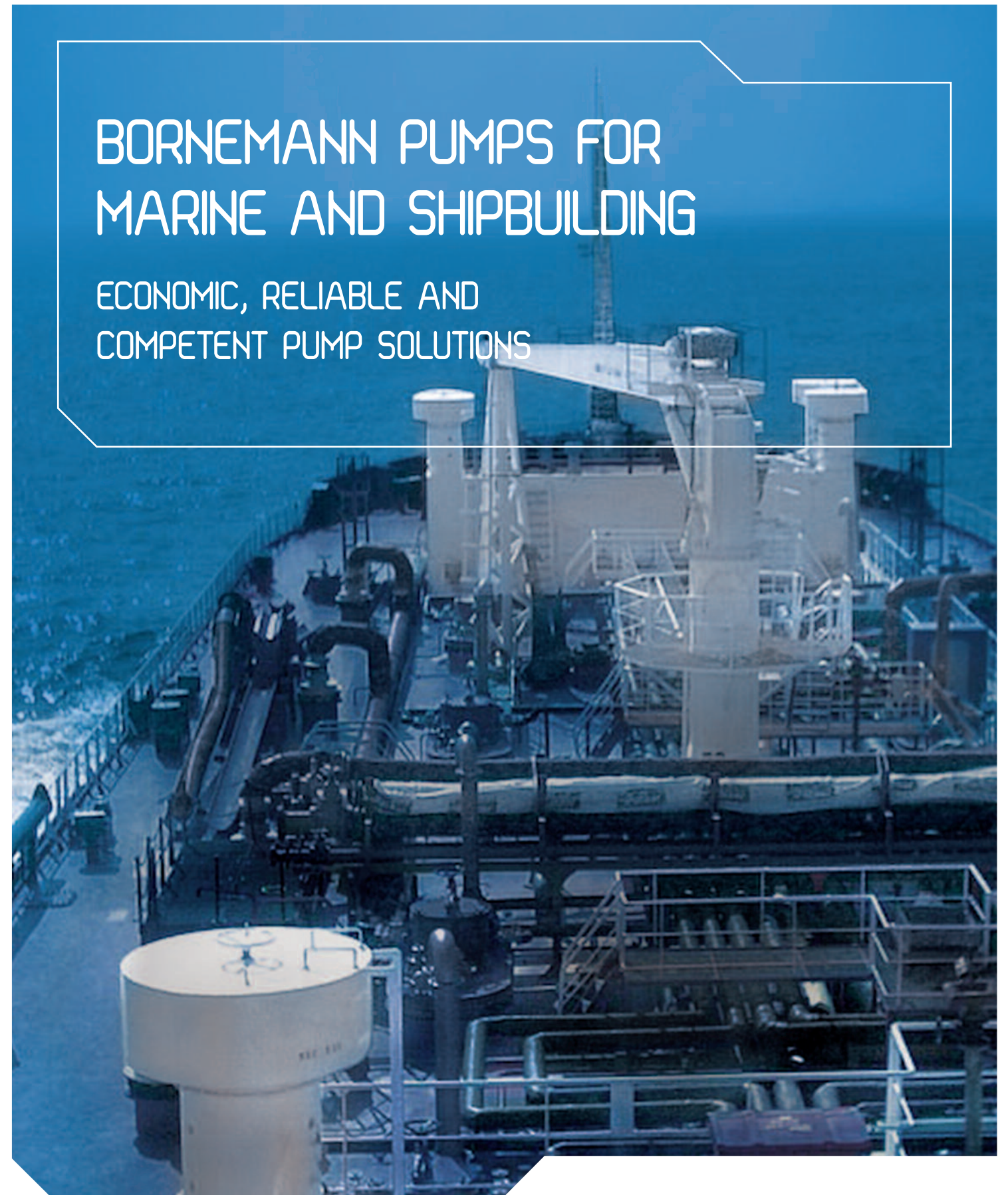
**Bornemann Pumps International
Tianjin**

Room 1101
Tianjin Binjiang International Hotel
No. 105 Jianshe Road
Heping District, Tianjin
CHINA

Fon: +86 22 5881 2997
Fax: +86 22 5881 2996
info.sales@bornemann-cn.com
www.bornemann-cn.com

BORNEMANN PUMPS FOR MARINE AND SHIPBUILDING

ECONOMIC, RELIABLE AND COMPETENT PUMP SOLUTIONS



© Bornemann - B 07/11 - The technical data stated in this brochure are indicative only and have to be determined for each individual case - Printed in Germany - Photosources: Bornemann, Fotolia





INSTALLING TOMORROW'S PUMP SOLUTIONS TODAY

TOP EFFICIENCY BY THE PIONEER IN PUMP MANUFACTURING

The success of Bornemann pumps in the marine and shipbuilding industry did not occur overnight, in fact, our company is a pioneer when it comes to screw pumps. Whether in new or refurbished ships, Bornemann pumps have always covered a broad range of applications, including loading and unloading tankers as well as providing reliable solutions in the machine room.

Bornemann's flagship product is its twin screw pump, which is available in various designs and performance characteristics to suit the individual application requirements.

Bornemann pump solutions can be found in almost all ships, particularly in supply ships used for the world's oil industry. If efficiency and reliability are a top priority, then the decision has to be Bornemann.



Our pumps have a long history of providing great efficiency and profitability. Bornemann pumps have been used in a broad range of applications for cargo handling, stripping and machine room systems. Bornemann pumps are ideally suited for offshore applications and in platform supply vessels.

Bornemann is the market leader for twin screw and multiphase pumps and one of the highest performing manufacturers of progressive cavity pumps.

WHY SHIPBUILDERS AND THE MARINE INDUSTRY CHOOSE BORNEMANN

Marine operations require intelligent, powerful and, above all, reliable pump solutions. Bornemann offers true performance with total flexibility, because its twin screw pumps and systems can be used in all possible fields within the marine industry – an industry that requires a great range and variety of products to be pumped. For that reason, pump system knowledge and expertise are crucial. Only by being familiar with all marine industry processes can the ideal solution be ensured.

FLEXIBILITY AND PROFITABILITY ARE THE DECIDING FACTORS FOR YOUR PUMP SOLUTION – BORNEMANN OFFERS THE SHIPBUILDING INDUSTRY BOTH

This is where Bornemann twin screw pumps guarantee tried-and-tested product quality. When it comes to loading or unloading tankers, lubricating the main diesel engine, pumping out bilge water and many other applications, Bornemann offers the perfect solution in every situation.

In addition, customers are confident in Bornemann's in-depth expertise. For more than 75 years the company has provided pumps and pump systems for almost any application. All this comes with a global customer service that can only be expected from the pump pioneers themselves.

Bornemann twin screw pumps have proven their worth internationally as loading pumps on tankers, transfer pumps for heavy-duty HFO and as lubricating pumps for supplying the main engine.

Bornemann progressive cavity pumps are used as sludge pumps, bilge pumps and pumps to feed oil extractors.



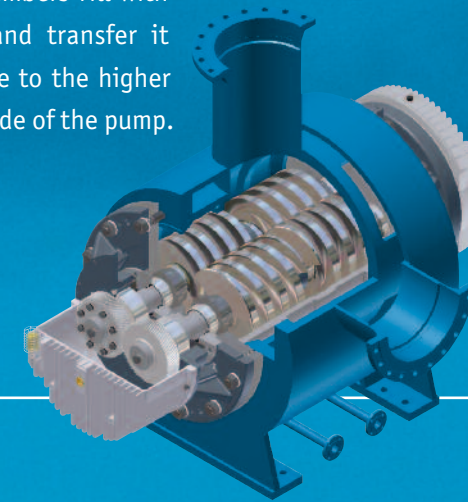
A HEART THAT BEATS POWERFULLY AND RELIABLY

Bornemann twin screw pumps are rotary positive displacement pumps; the gearwheels and roller bearings are externally mounted and never come in contact with the pumped media. Around 80 models are available, in various materials, sizes and forms, providing application-optimised solutions.

Bornemann pumps cover a wide performance range in capacity, pressure, temperature and viscosity. Virtually all types of liquids can be handled i.e. low viscosity liquids such as petrol, hydrocarbons, seawater, or high viscosity liquids such as bitumen, tar, glue, molasses and chemical products.

Bornemann twin screw pumps are double-flow and self priming. There is no metal-to-metal contact between the pump screws and the housing. As the pumping elements rotate, the inter-meshing of the two screws along with the pump housing form chambers. These chambers fill with the pumped fluid and transfer it from the suction side to the higher pressure discharge side of the pump.

The pump is designed to allow for reverse flow by simply changing the shaft direction. The suction becomes the discharge and vice versa, all without any modifications to the pump.

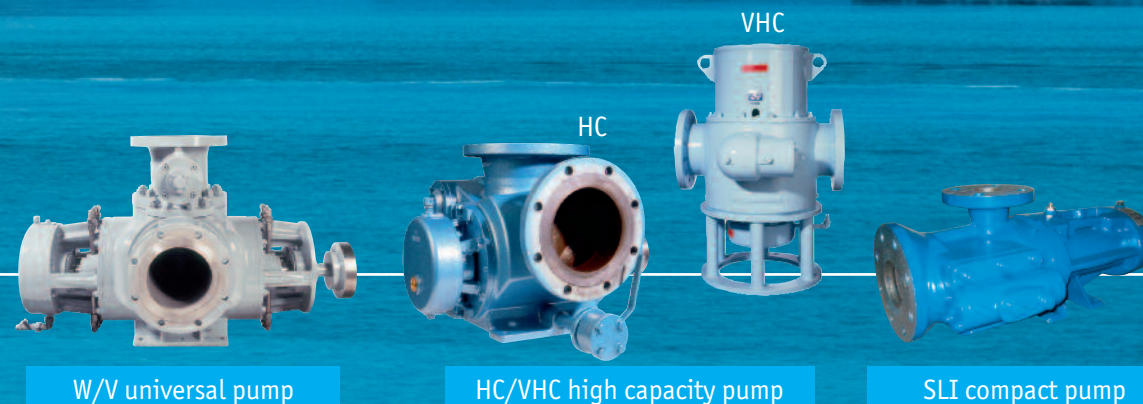


TECHNOLOGICAL COMPETENCE AND EXTENSIVE FLEXIBILITY

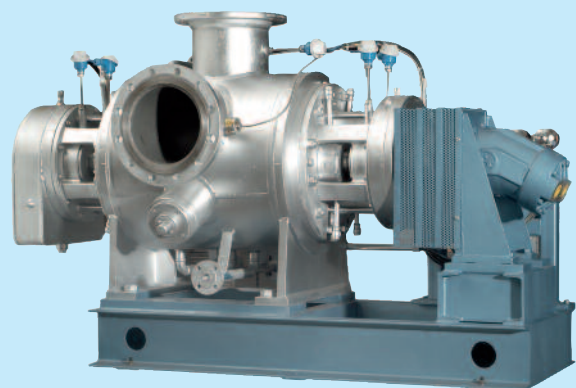
- ▶ Bornemann twin screw pumps are self priming
- ▶ Twin screw pumps are ideally suited for viscous liquids
- ▶ Broad product range of both, twin screw and progressive cavity pumps
- ▶ Compact design ensures space-saving set-up
- ▶ Functional principle ensures low-pulsation and low-noise operation
- ▶ Short-term dry run operation possible
- ▶ High suction lift up to 8,5 m (25 feet)
- ▶ Constant flow at varying pressures and volumes
- ▶ All essential components are produced by Bornemann
- ▶ Intensive research and development to increase efficiency and profitability



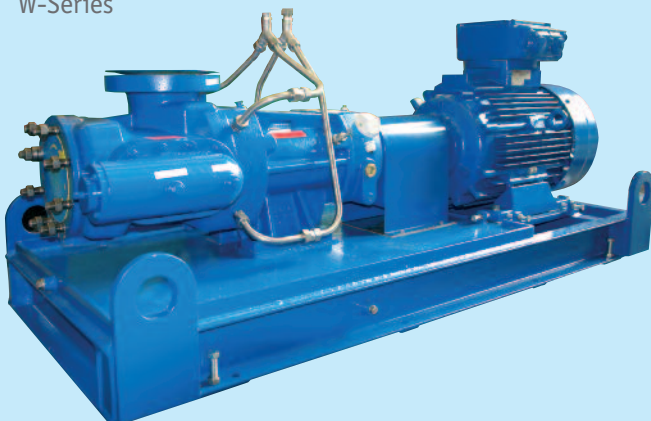
| | Capacity | | Differential pressure | | Viscosity | Max. Product Temperature | |
|----------------------------------|-------------------|--------------|-----------------------|---------------|--------------------------|--------------------------|-----------|
| | m ³ /h | gpm | bar | psi | mm ² /s cSt | °C | °F |
| W/V universal pump | 10 - 2,800 | 50 - 12,300 | up to 40/60 | up to 600/900 | 0,5 - 200,000 | up to 350 | up to 660 |
| HC/VHC high capacity pump | up to 2,500 | up to 11,000 | up to 16 | up to 230 | 1 - 20,000 | up to 120 | up to 250 |
| SLI compact pump | up to 180 | up to 790 | up to 16 | up to 230 | up to 100,000 | up to 120 | up to 250 |



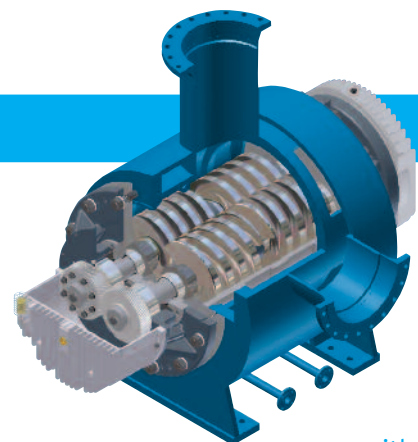
CARGO PUMPS AND SYSTEMS



W-Series



SLI-Series



Twin Screw Pumps
with External Bearings

- Application:** Cargo Pumps
Stripping Pumps
Bitumen Pumps
Ballast Pumps
Booster Pumps
- Design:** Horizontal, vertical and submerged
- Series:** W, V, U, T
HC/VHC
SLI
- Capacity:** Up to 2,800 m³/h
- Advantages:**
- ▶ Self priming and high suction performance (up to -0,8 bar)
 - ▶ Installation on deck up to tank depth of 5,5 m possible – no separate pump is required
 - ▶ No separate stripping system with extra control devices is required
 - ▶ High viscosity range possible
 - ▶ Different delivery heads – no booster pumps necessary
 - ▶ Very low pulsation/noiseless operation

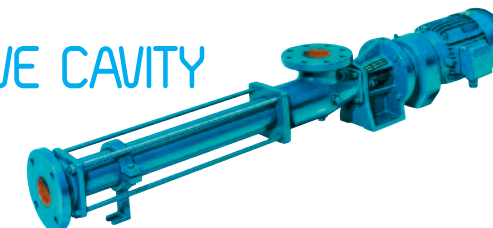
ENGINE ROOM PUMPS

Twin Screw Pumps
with Internal and
External Bearings



- Application:** Main-Engine Lubeoil Pumps
HFO-Transfer Pumps
- Design:** Horizontal, vertical and submerged
- Series:** W, V, U, T
- Capacity:** 80 to 800 m³/h
- Advantages:**
- ▶ Very low NPSH
 - ▶ Very low pulsation/noiseless operation
 - ▶ Smooth oil conveyance
 - ▶ Constant flow at varying pressures and volumes
 - ▶ High viscosity range possible

PROGRESSIVE CAVITY PUMPS



- Application:** Sludge Pumps, Bilge Pumps, Sewage Pumps
- Design:** Horizontal and vertical
- Series:** EU, EL, EH
- Capacity :** 0.5 to 300 m³/h
- Advantages:**
- ▶ Very low pulsation/noiseless operation
 - ▶ Rugged compact design
 - ▶ Pumping of solids

